



ENVISION MAPPING

COASTAL MANAGEMENT

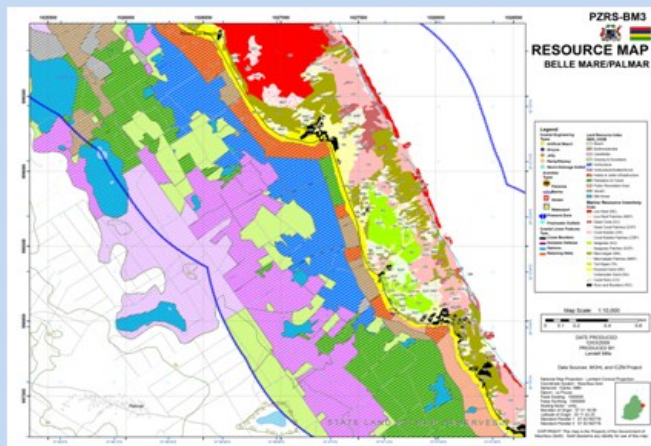
Community-based Management: following the 2004 tsunami in South Asia, an EU project in Thailand aimed to develop capacity in local fishing communities and schools to enable them to assess their coastal resources and livelihood security, and to use the information to set agendas with their local councils.

Envision:

- Developed a monitoring approach for assessing coastal resources.
- Supported the community to implement monitoring, analyse the results and set out an agenda for change with their local councils.



Training for local communities - GIS and resource assessment techniques.



Example resource map for coastal management in Mauritius.

Coastal Management in Mauritius: The Mauritian government proposed a new national park, made up of islands with both high conservation status and potential for tourist development, and also initiated development of a national coastal management strategy. **Envision:**

- Developed a GIS of offshore islands to set up the new national park.
- Provided expert advice and information to deliver an improved GIS, database and associated materials and recommendations for management.
- Produced habitat maps and assessed issues affecting existing infrastructure and future developments.

Coastal Habitat Mapping in St Lucia: The Government of St Lucia commissioned a coastal habitat mapping study to clearly identify its resources and support coastal management.

Envision:

- Mapped the coastal habitats of St. Lucia.
- Provided ground-truthing of habitat types.
- Identified marine health indicators.
- Designed and delivered training in mapping, health indicators and coastal management.



Mapping the coastal habitats of St. Lucia, Caribbean.